

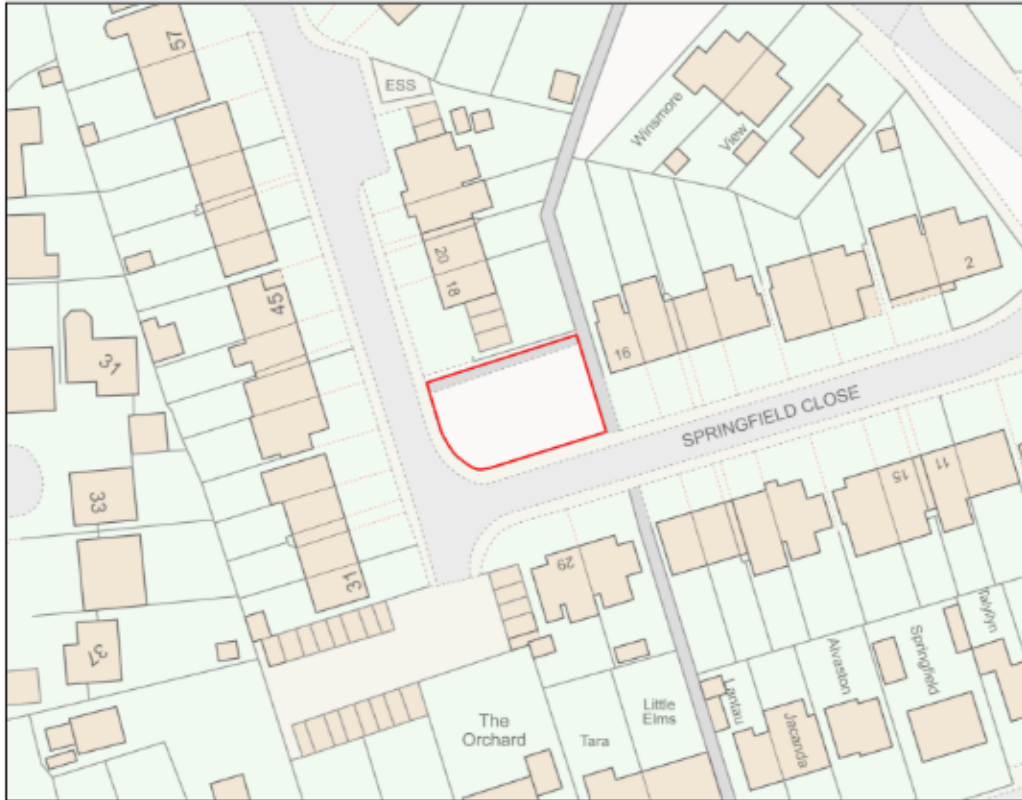
# 24/00389/FUL – Land at Springfield Close

## Proposed works:

Erection of one dwellinghouse.

The application is at planning committee at the request of Councillor Collins due to the level of local interest/concern.

# Site Location Plan



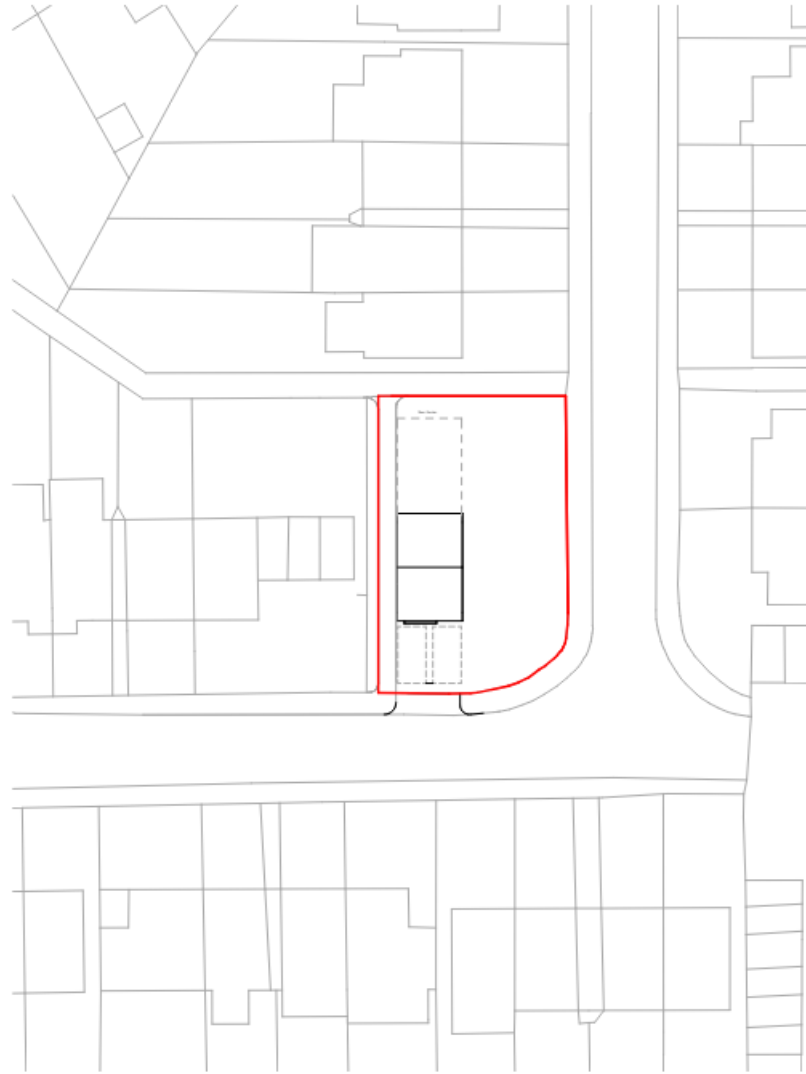


Site Photo

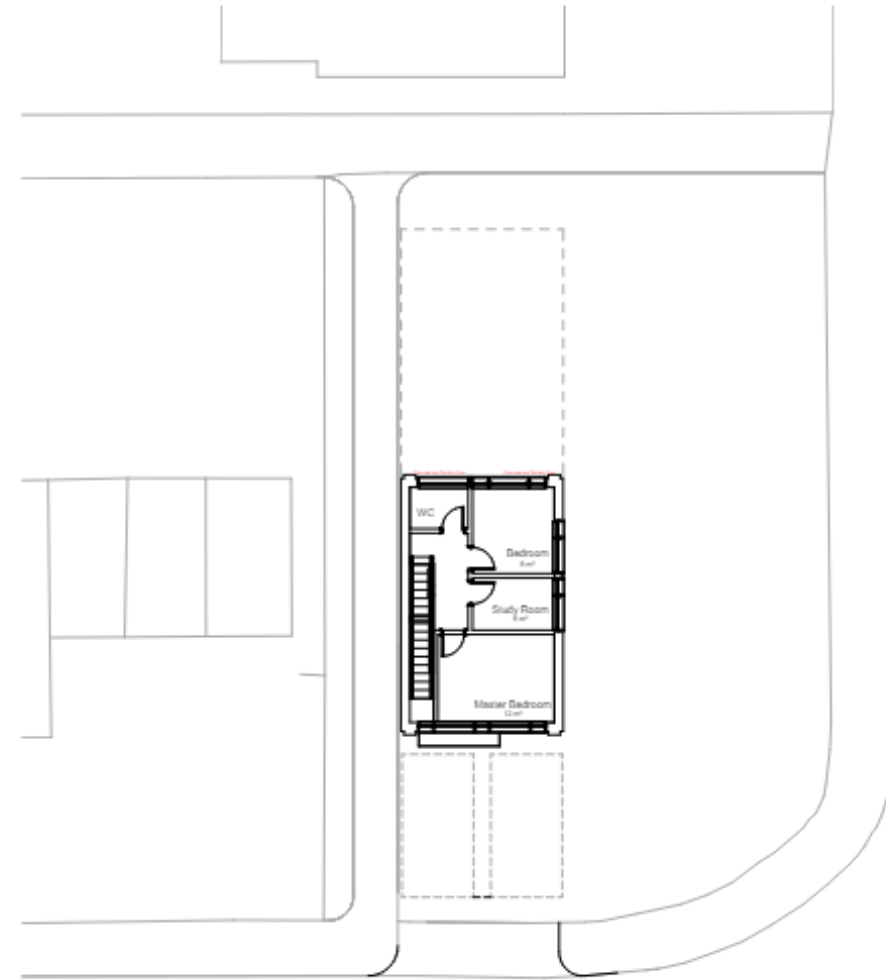
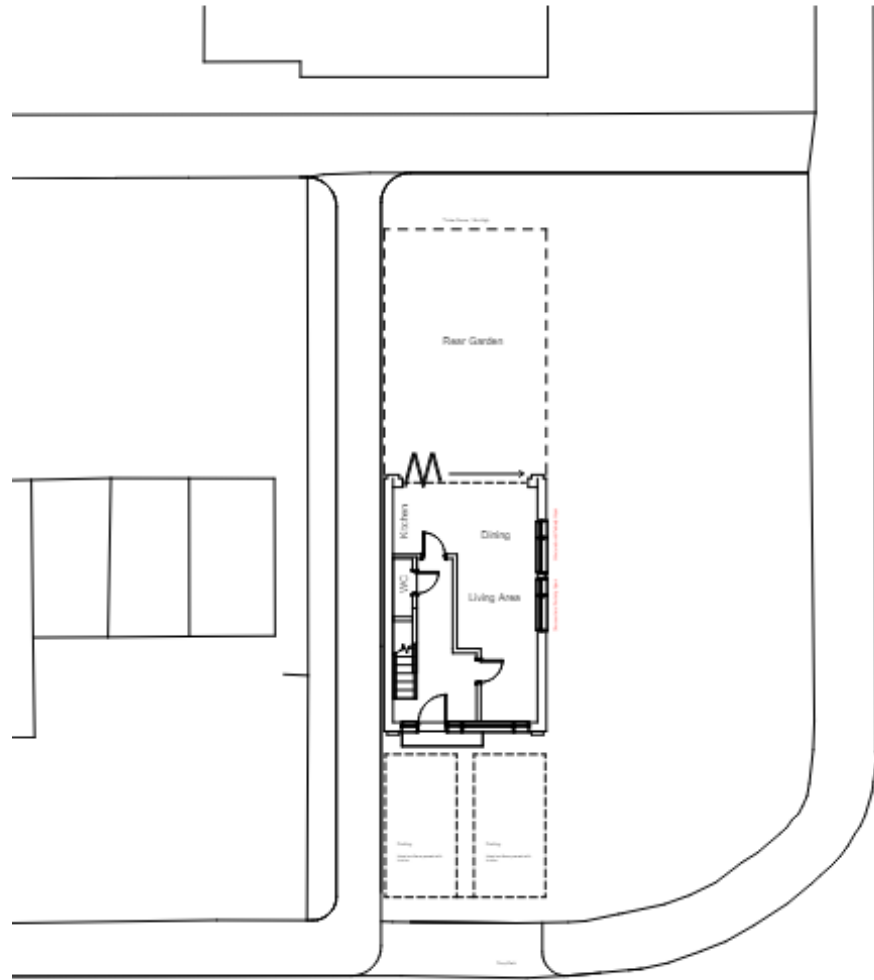




Site photo

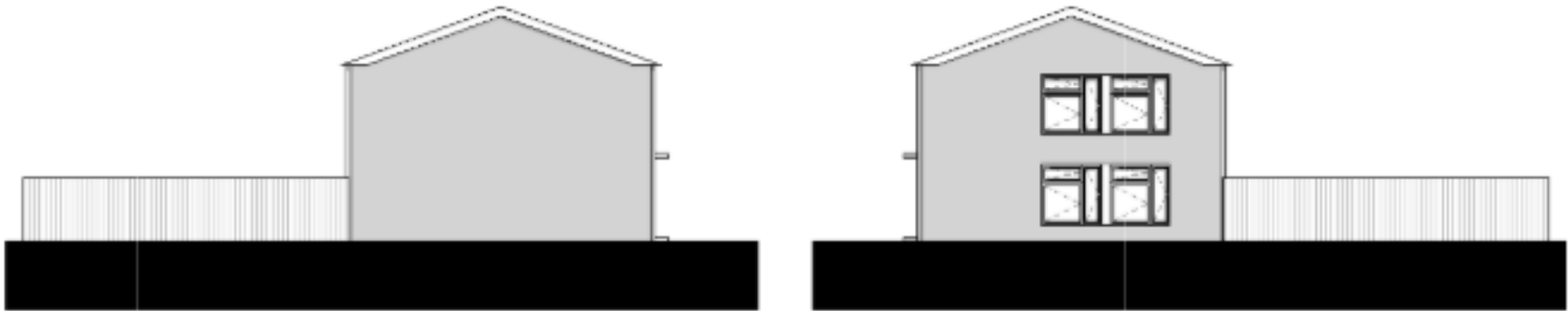


Proposed Block Plan



Parking space paved with bricks.  
Will be drained, no water flows  
onto highway.

Proposed Plans



Proposed Elevations

# Key Planning Matters

- Principle
- Site layout and design
- Impact on neighbouring amenity
- Parking and highway safety
- Sustainability
- Impact on Beechwoods SAC
- Bio-diversity Net Gain



# Recommendation – Permit subject to conditions

## Conditions:

- Time
- Approved plans
- Submission of materials
- Submission of landscaping details
- Implementation of access and parking
- Removal of PD rights for new boundary treatments
- Removal of PD rights for dormers
- Removal of PD rights for further openings
- Rear windows to be obscurely glazed and high level opening.